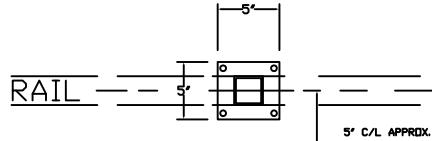


**MATERIAL**

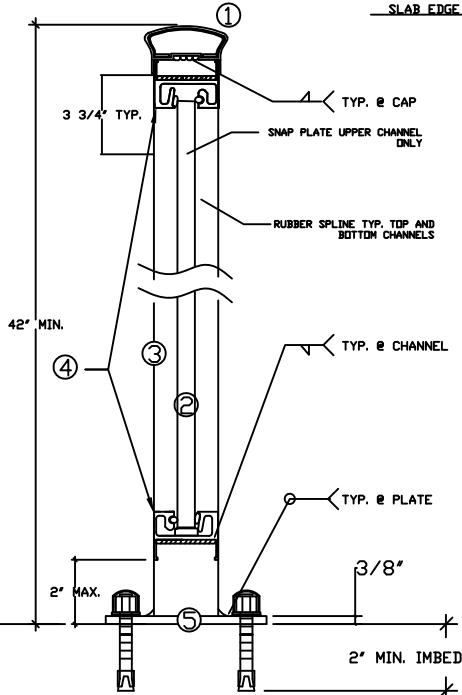
- 1) 3" ROUND TOP CAP
- 2) 1/2" TEMPERED GLASS BRONZE TINT
- 3) 2" SQ. X .125" POST
- 4) 2" X 1 1/2" GLASS CHANNEL W/WELDING LEGS
- 5) 5" X 5" X 3/8" BASE PLATE  
W/(4) 3/8" X 3" S.S. WEDGE ANCHORS  
WITH PLASTIC DOME CAPS



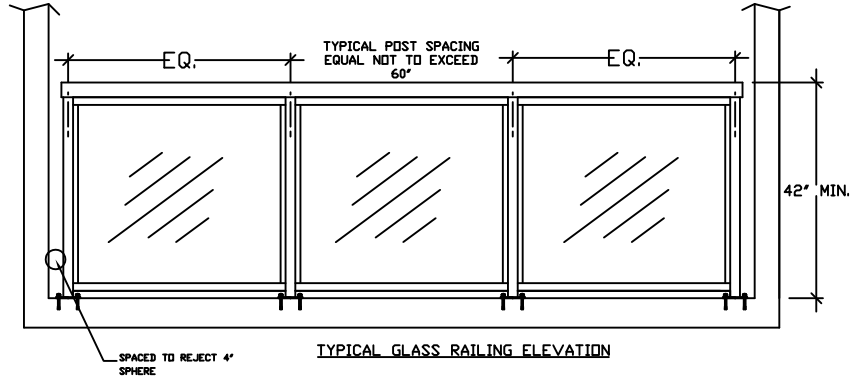
SLAB EDGE  
RAIL FROM SLAB EDGE

**NOTES:**

- 1) **MATERIAL:** EXTRUDED ALUMINUM GRADE 6000 SERIES T5 OR T-6 AS AVAILABLE.
- 2) **FABRICATION:** ALL RAIL SECTIONS TO BE WELDED UNITS IN THE LONGEST LENGTHS PRACTICAL TO FACILITATE HANDLING AND FINISHING CONDITIONS.
- 3) **FINISH:** STANDARD COLOR
- 4) DUE TO VARIATIONS IN MATERIALS AND FABRICATION, A REASONABLE DEGREE OF VARIATION CAN BE EXPECTED WITH REGARD TO SPLICE JOINTS.



TYPICAL THRU RAILING GLASS WALKWAY RAILING



TYPICAL GLASS RAILING ELEVATION

ELITE CUSTOM RAILING	
E-G100 GLASS RAILING	
DATE: 05-04-06	TYP. GLASS RAILING