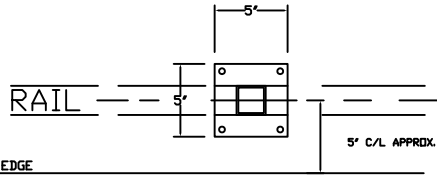


**MATERIAL**

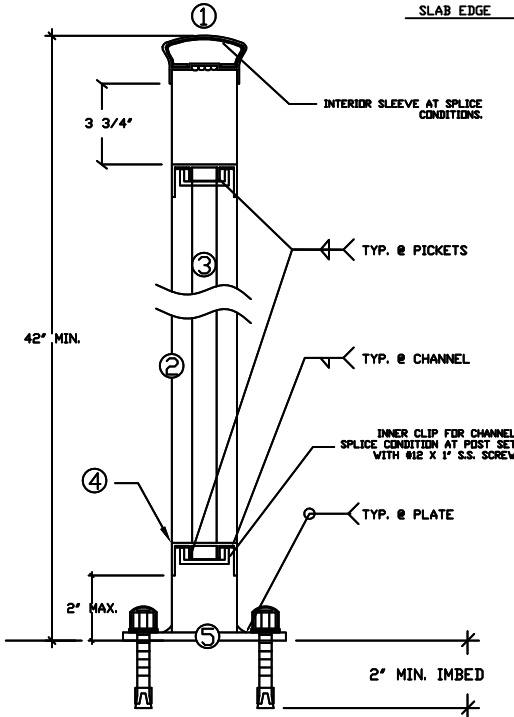
- 1) 2.625" x 1.5" X .093" OVAL TOP CAP
  - 2) 2" SQ. X .093" POST
  - 3) .75" SQ. X .0625" PICKETS
  - 4) 2" X 1" X .093/.056" CHANNEL W/WELDING LEGS
  - 5) 8" X 5" X 1/4" BASE PLATE
- W/(4) 3/8" X 3" S.S. WEDGE ANCHORS WITH PLASTIC DOME CAPS



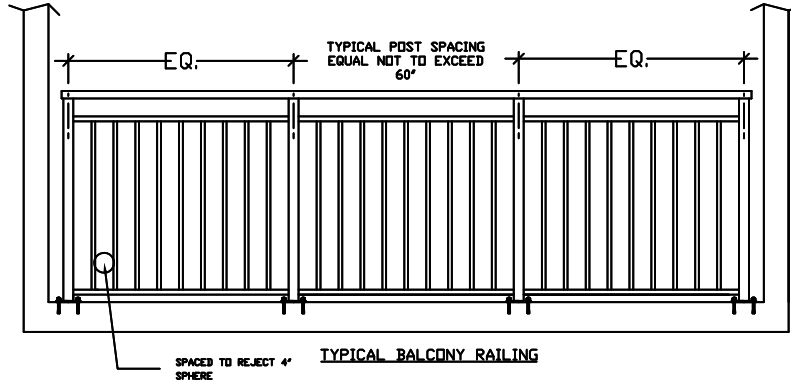
RAIL FROM SLAB EDGE

**NOTES:**

- 1) **MATERIAL:** EXTRUDED ALUMINUM GRADE 6000 SERIES T5 OR T-6 AS AVAILABLE.
- 2) **FABRICATION:** ALL RAIL SECTIONS TO BE WELDED UNITS IN THE LONGEST LENGTHS PRACTICAL TO FACILITATE HANDLING AND FINISHING CONDITIONS.
- 3) **FINISH:** STANDARD COLOR
- 4) DUE TO VARIATIONS IN MATERIALS AND FABRICATION, A REASONABLE DEGREE OF VARIATION CAN BE EXPECTED WITH REGARD TO SPLICE JOINTS.



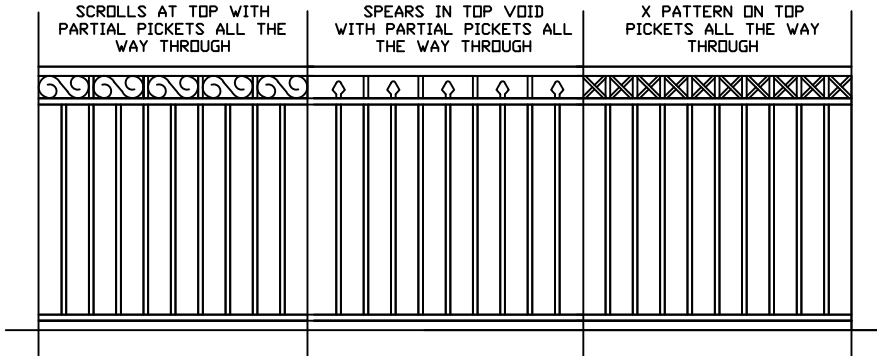
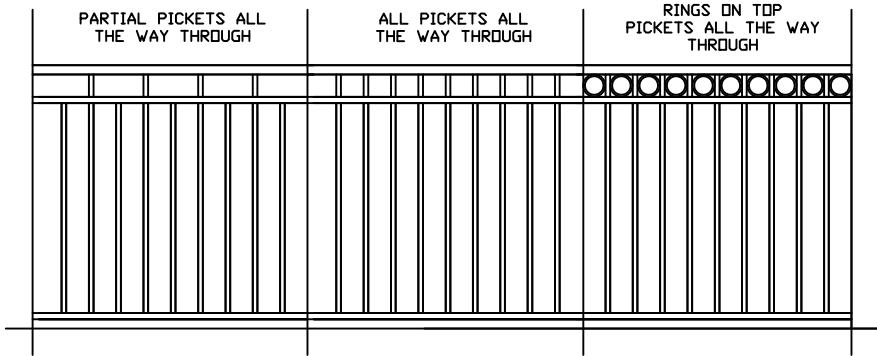
TYPICAL THRU RAILING ELEVATION



TYPICAL BALCONY RAILING

ELITE CUSTOM RAILING	
E-301 RAILING SYSTEM	
DATE: 05-04-06	TYP. BALCONY RAIL AND COMMON WALK

E-301 RAILING IDEAS



DRAWINGS ARE JUST A FEW IDEAS OF WHAT CAN BE ACCOMPLISHED WITH A FEW MODIFICATIONS TO STANDARD E-301 RAILING. IF YOU SEE SOMETHING YOU LIKE OR HAVE OTHER IDEAS CONTACT SALES AT 1-877-257-0192

ALUMINUM RAILING IDEAS

ELITE CUSTOM RAILINGS INC.  
DAYTONA FL. (386) 257-0191

E-301C

ELITE CUSTOM RAILING	
E-301 RAILING IDEAS	
DATE: 05-04-06	TYP. BALCONY RAIL AND COMMON WALK